



spindrift
for schools

TRIBE :

DATE

STEP 2

Our impact on biodiversity and climate

Major threats to biodiversity



- **Biodiversity is threatened by the human species. There are 5 main causes:**
- **The degradation of natural habitats**
- **Climate change**
- **Water, soil and air pollution**
- **The introduction of invasive alien species**
- **Overexploitation of wild species**

Has the environment around your tribe changed?

Why and what are the consequences?



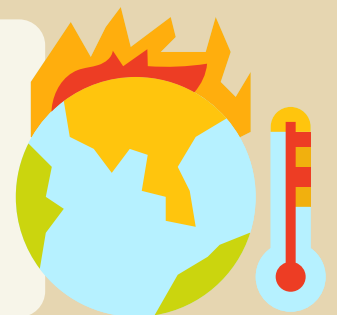
To answer this question you can ask older people if the environment around you has been degraded.



The human species modifies the environment for its needs, that causes a fragmentation of the habitat which involves a division of the natural environment in smaller surfaces (creation of road, railroad line, housing...)

What are the impacts of climate change on species?

Establish a list of possible consequences and impacts on biodiversity



Global warming is the increase of temperatures on the whole planet and over a long period of time. The combustion of coal, oil and gas (our main sources of energy) emit CO₂, the first greenhouse gas responsible for the increase in temperature.

What sources of pollution do you see around you?



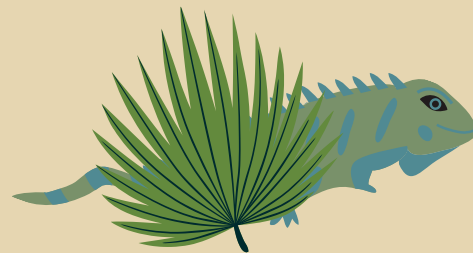
Pollutions are multiple and sometimes invisible. We count among the different pollution: plastic, sound, light, chemical pollution and also CO2 emissions (you know, this greenhouse gas which is released by human activities).

Is there an invasive alien species* in your area or not far from your tribe?

Write a few words about this species below. Is it a problem for other species or for the ecosystem in which it is found?



An animal or plant species introduced by humans into an environment outside its native range that poses a threat to local species



To go further...

Do you know of any environments or species that are victims of overexploitation*?

You can give one or more examples



Overexploitation is when the removal of a resource exceeds its capacity to replenish itself naturally. Simply put: the human species uses nature too much and it does not have time to renew itself naturally.